



111 HEKILI ST STE A106 KAILUA, HI 96734
OFFICE (808)230-2422
FAX (808)230-2433
DALY'S CELL (808)306-9090
www.dashpacific.com

THE NEXT GENERATION OF PORTABLE SHELTER SYSTEMS

To view FORTS videos go to →
dashpacific.com/#links → Videos →
“Forts Foldable Buildings”

FORTS utilizes an innovative fold-out technology to provide a comfortable rapidly deployable, and highly energy efficient portable shelter system.



FORTS ADVANTAGES:

- Easily transportable by flat-bed, ship, or helicopter
- Rapid 30 minute set-up by 3 people
- Lightweight insulated aluminum panel construction
- 4 units store in an 8' x 40' ISO container
- Fully integrated HVAC, lighting, data and electric
- Forklift pickets, and wheel option for mobility
- Secure for 170 mph wind loads
- Waterproof, designed for extreme weather conditions
- Highly energy efficient
- 30 Year life cycle
- Built-in leveling for any surface (sand, grass, etc.)
- Reduces Storage Area Requirements
- Interlocking walls provides structural integrity
- Private and Open Floor Plans

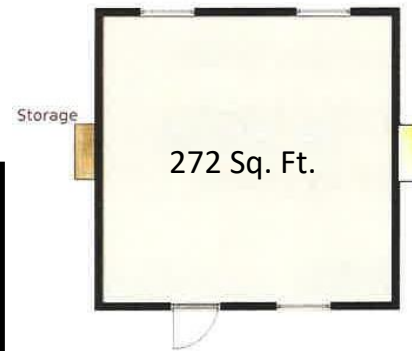


111 HEKILI ST STE A106 KAILUA, HI 96734
OFFICE (808)230-2422
FAX (808)230-2433
DALY'S CELL (808)306-9090
www.dashpacific.com

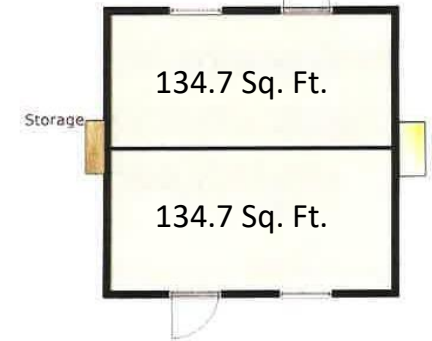
MODEL TYPES & SPECIFICATIONS



One Room Model



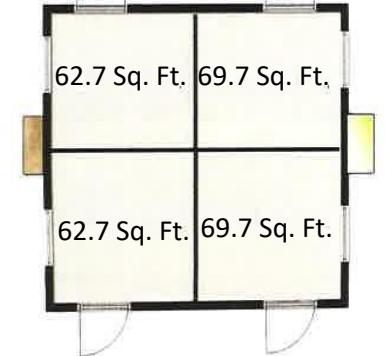
Two Room Model



Three Room Model



Four Room Model



Shipping: 8'6" H x 2'6" W x 19'6" L

Deployed: 8'6" H x 17' W x 19'6" L

Interior: 7'5" H x 16'2" W x 16" L

Weight: 3600 lbs.

Wall Mount Bard 2 Ton HVAC, 5 Kw Heat Strip (10,800 BTU)

100 amp Electric Service Panel, LED Lighting

(3) Single Hung Insulated Windows 42" x 52"

(1) Insulated solid core entry door with lockset (36" x 80")

6:1 Storage Ratio (40' container, flatbed)

Multi-Room Options available